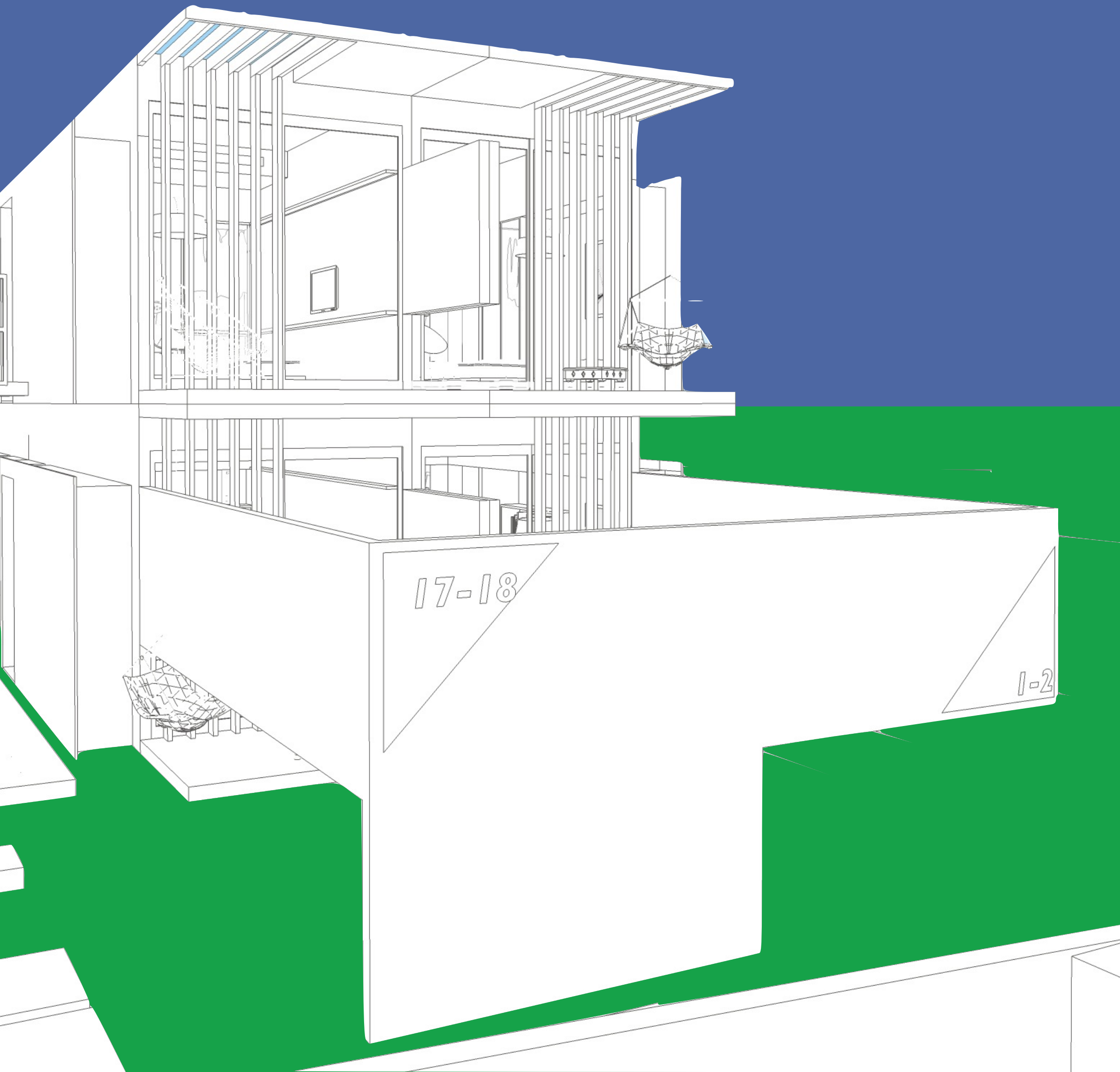


the **cutbes**.co

@ Nimbin

Tomorrow's accommodation @ Yesterday's prices
starting @ \$99 per night, 365 nights a year...





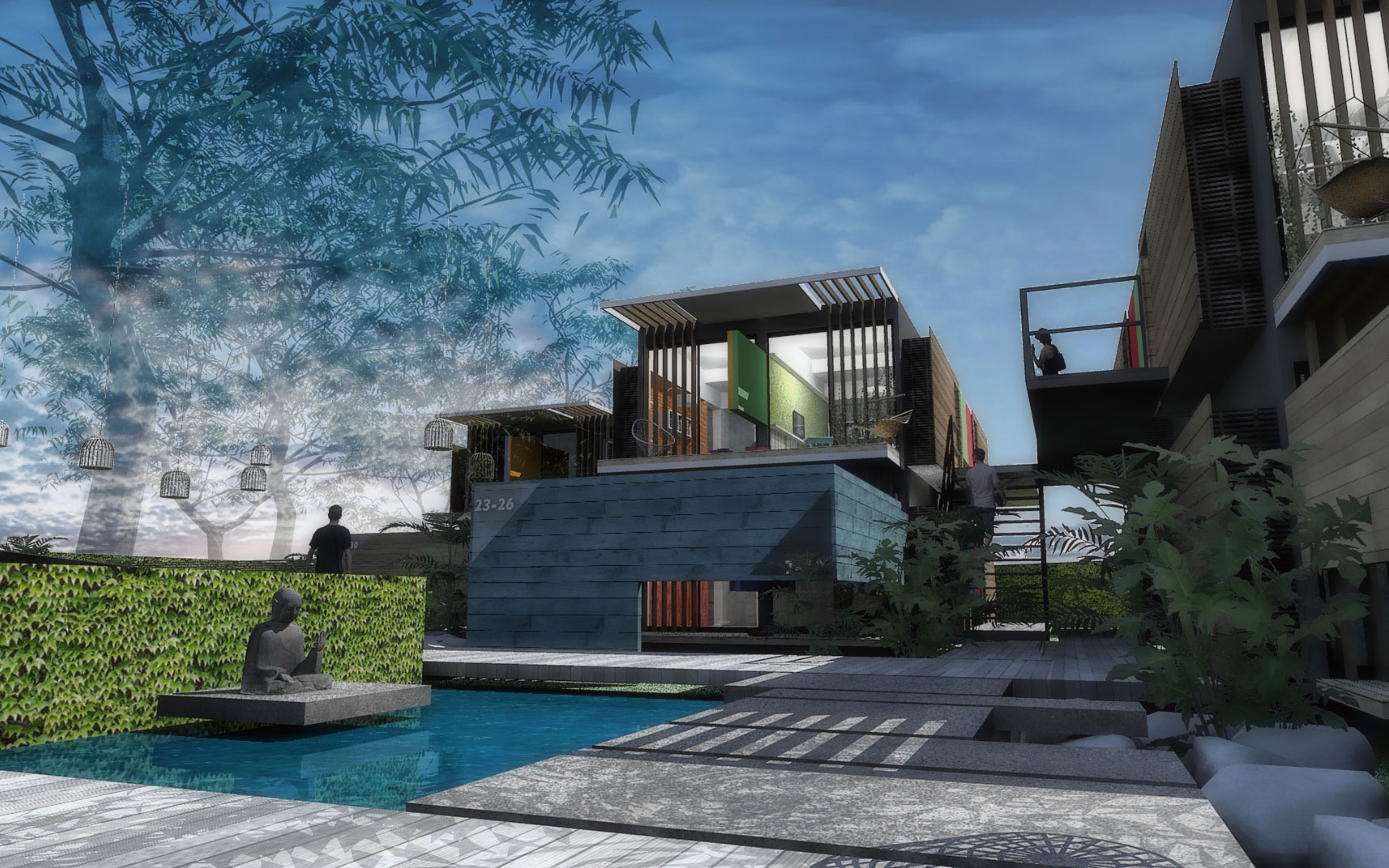
theCubes.co

A contemporary 24 unit hotel in Nimbin, NSW, Australia.

Conceived and carefully designed to be prefabricated off site, the project aims to achieve high standards in sustainability, quality, comfort and design.

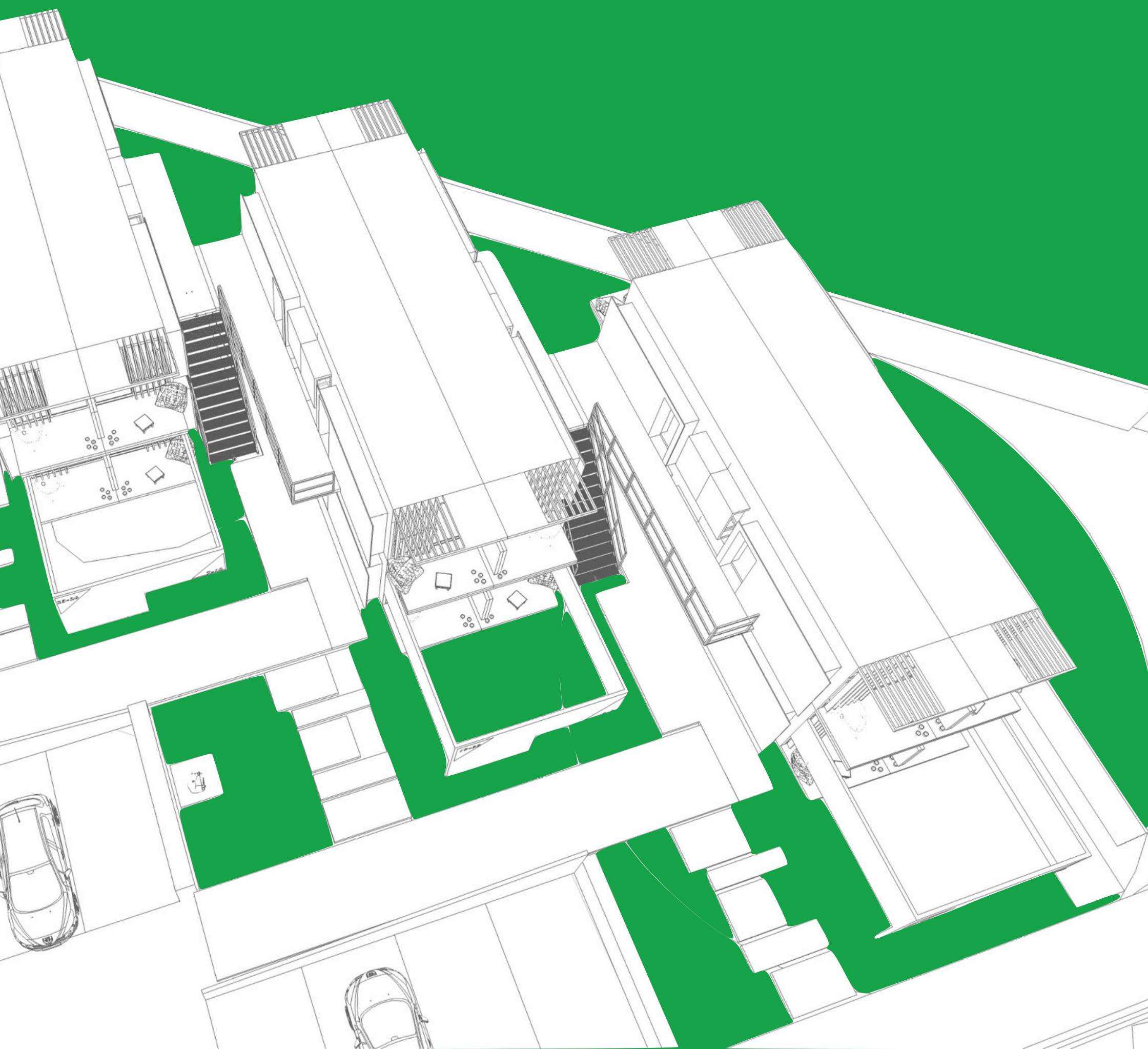
The hotel has been conceived as an affordable accommodation that by virtue of careful planning does not sacrifice design or quality finishes.

Tomorrow's accommodation @ yesterday's prices starting @ \$99 per night, 365 nights a year...



23-26

30



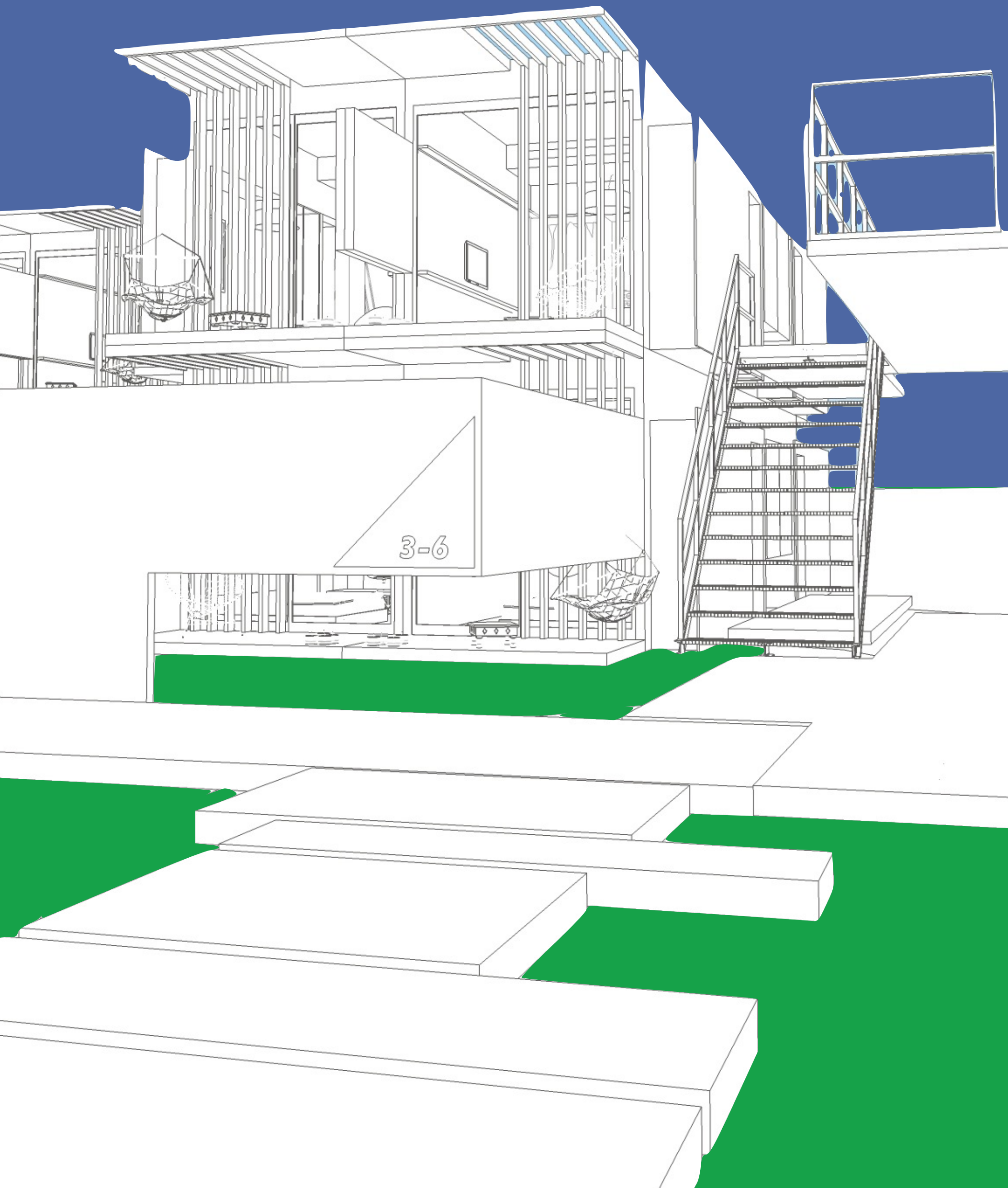
Sustainability

We envision a green project in all the sense of the word. A refuge within nature for travelers. With this in mind, a comprehensive sustainable approach has been developed:

- Rainwater storage and re-use.
- Solar panels for water heating and power generation
- LED lighting.
- Double glazing, insulation and architectural shading.
- Pre fabrication off site.
- Efficient carbon footprint accounting.

Although the project is quite eco minded, we want the users to perceive its green characteristics not through all the ecological technology,... but rather through its actual green, natural atmosphere.



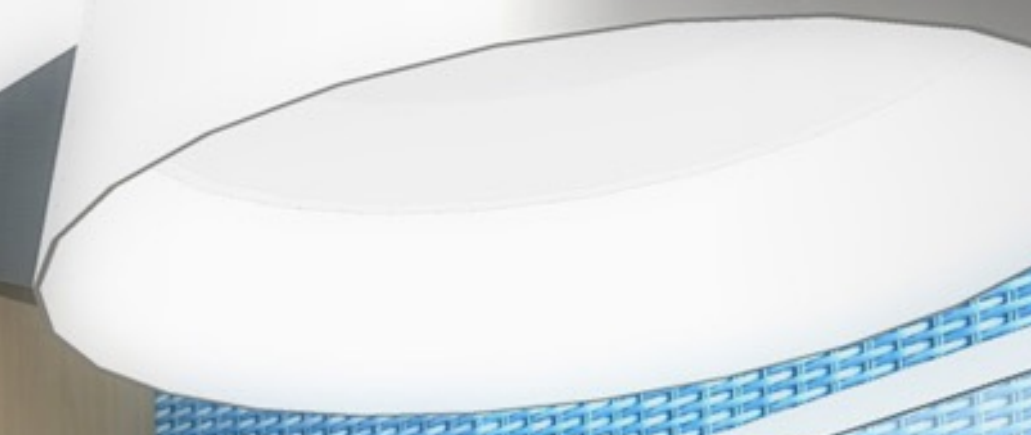
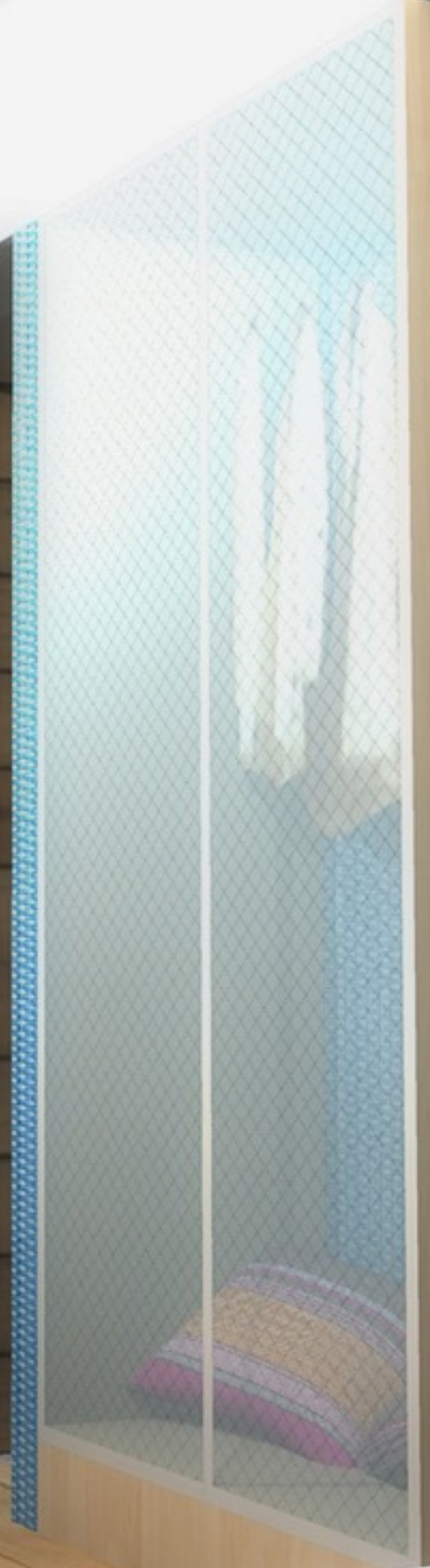


the Cubits

This is how we have named each individual accommodation unit within the hotel. Modular designs will be used, to cater for slightly different tastes or needs.

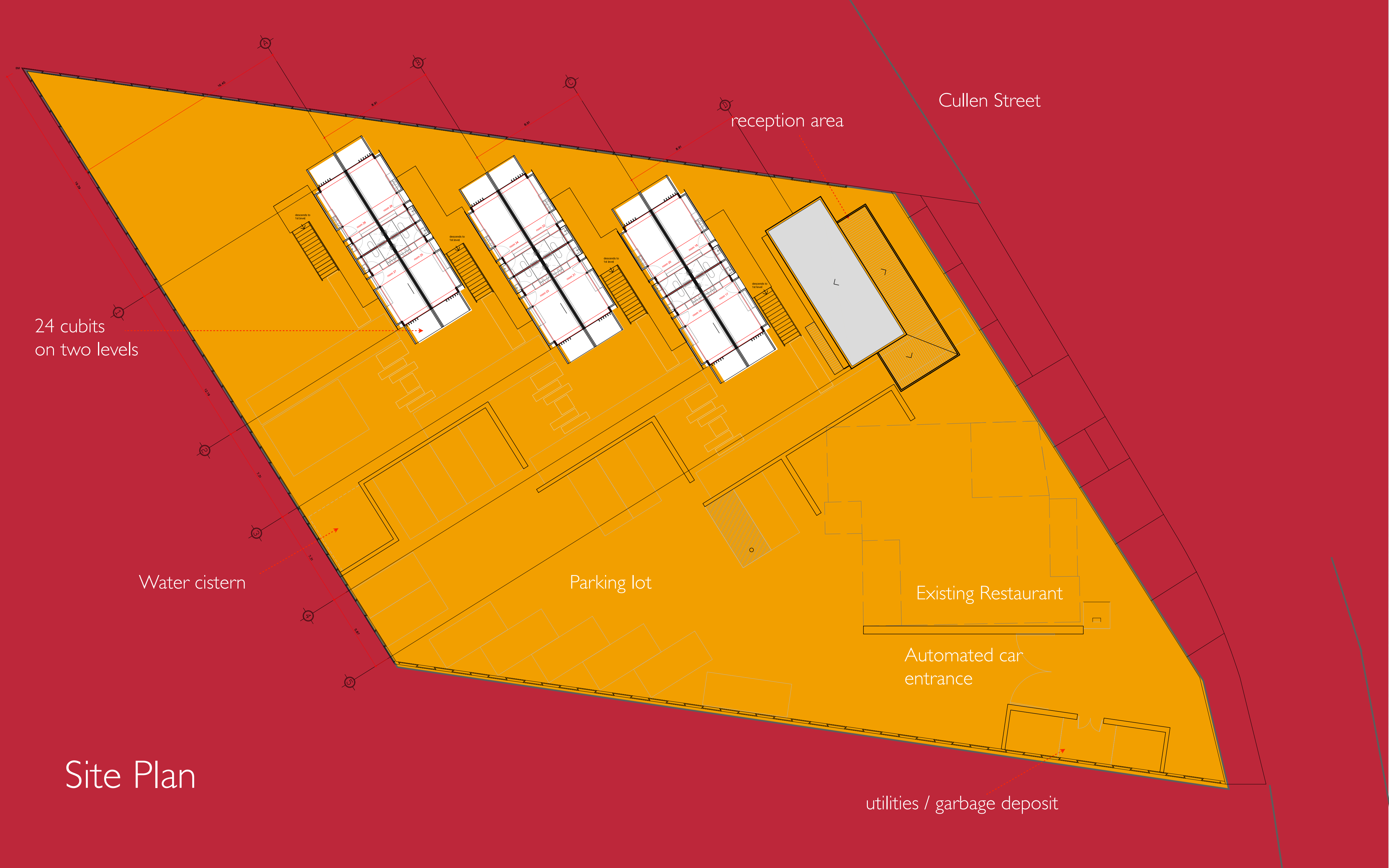
Each Cubit has the following characteristics:

- Double glazed operable windows and full insulation for temperature and comfortable sound levels.
- State of the art electronic connections for the mobile traveller.
- Natural lighting and ventilation for the bathroom.
- High quality coffee espresso machine and minibar.
- High quality linens.









Cullen Street

reception area

24 cubits
on two levels

Water cistern

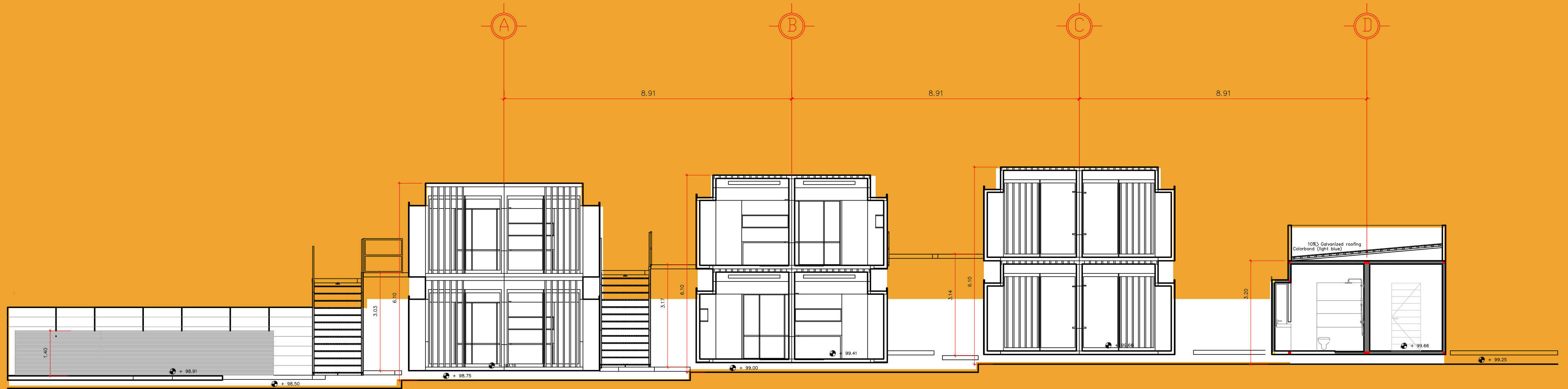
Parking lot

Existing Restaurant

Automated car
entrance

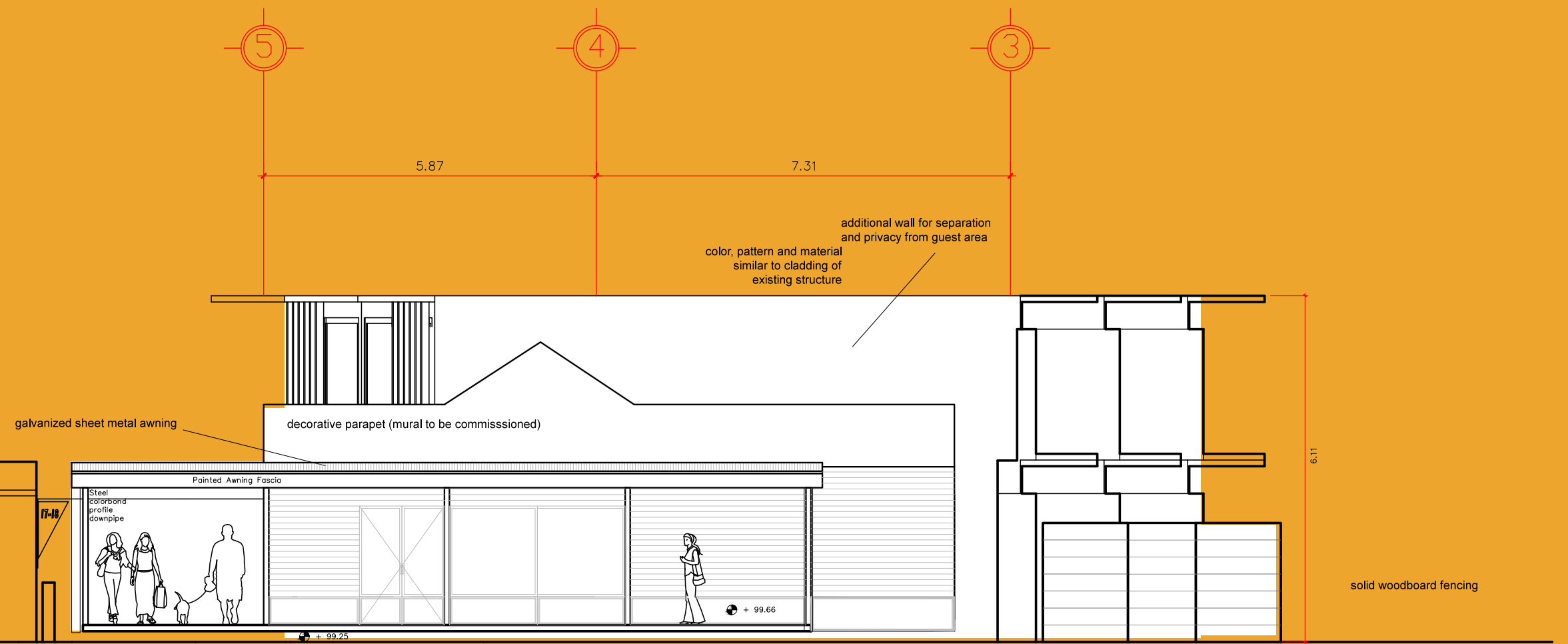
utilities / garbage deposit

Site Plan

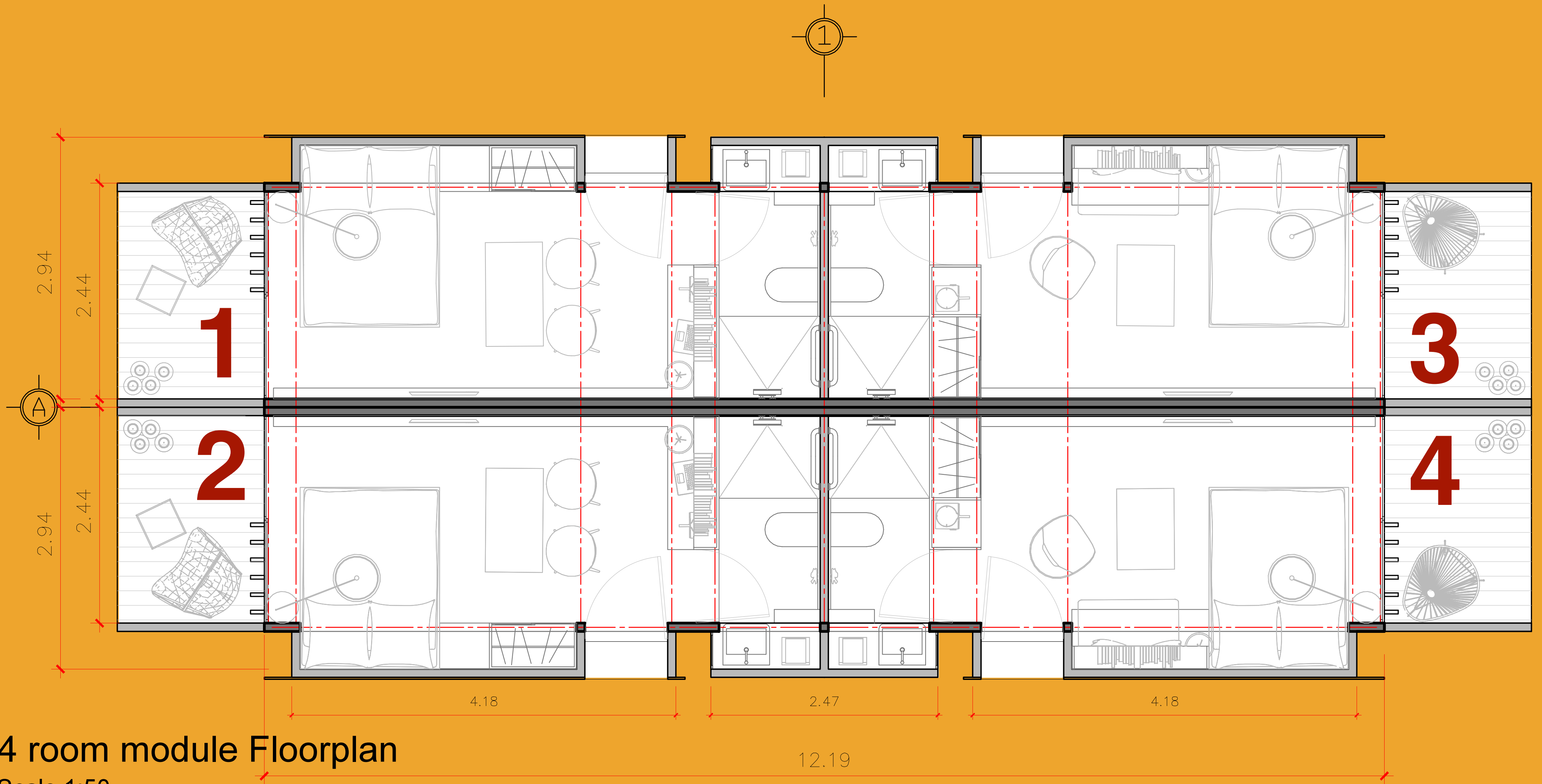


section

medium height divisions and shrubbery separate parking area from the cubits

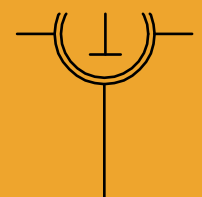


front elevation



4 room module Floorplan

Scale 1:50



future developments

We intend to create a recognisable, replicable concept to be developed in future locations. The idea behind the concept is to maintain cubit design standards through out future developments and then design the landscaping site specific.

Always keeping in mind sustainability issues that form an indivisible part of the concept.

theCUBES.co		
		John Seymour Director
		thecubes.co - Hospitality Forum Pty. Ltd. 80 Cullen Street, Nimbin NSW Australia 2480
		+61 412 222 005
		john.seymour@thecubes.co
		www.thecubes.co
theCUBES		tomorrow's accommodation @ yesterday's prices \$99 per night, every night, 365 nights a year